



# CorePro LEDtube EM/ Mains T8

## CorePro LEDtube 1200mm 15.5W 840 T8 AP I

The CorePro LEDtube is an affordable LED solution suitable for replacing T8 fluorescent lamps. The product provides a natural lighting effect for use in general lighting applications, as well as instant energy savings – an environmentally friendly solution.

### Warnings and Safety

• -

### Product data

General Information		Operating and Electrical	
Cap-Base	G13 [Medium Bi-Pin Fluorescent]	Input Frequency	50 to 60 Hz
Nominal lifetime	50,000 hour(s)	Power Consumption	15.5 W
Switching Cycle	200,000	Lamp Current (Nom)	84 mA
Lighting Technology	LED	Starting Time (Nom)	0.5 s
		Warm-up time to 60% light	0.5 s
		Power Factor (Fraction)	0.9
		Voltage (Nom)	220-240 V
Light Technical		Temperature	
Color Code	840 [CCT of 4000K]	T-Case Maximum (Nom)	60 °C
Beam Angle (Nom)	240 degree(s)		
Luminous Flux	1,800 lm	Controls and Dimming	
Color Designation	Cool White (CW)	Dimmable	No
Correlated Color Temperature (Nom)	4000 K		
Luminous Efficacy (rated) (Nom)	116 lm/W	Mechanical and Housing	
Color Consistency	<6	Bulb Finish	Frosted
Color rendering index (CRI)	80	Bulb Material	Glass
LLMF At End Of Nominal Lifetime (Nom)	70 %		
Photobiological safety according to EN 62471	RG0		

# CorePro LEDtube EM/Mains T8

Product Length	1,200 mm
Bulb Shape	T8
Net Weight (Piece)	0.220 kg

## Approval and Application

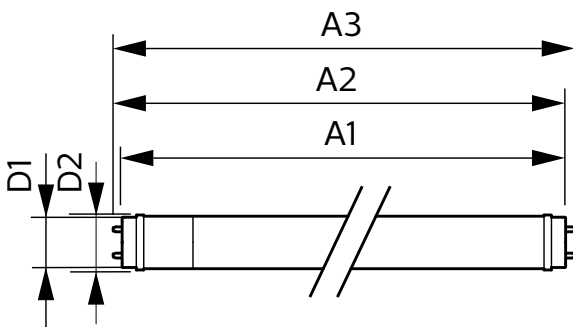
Energy Saving Product	Yes
Approval Marks	RoHS compliance KEMA Keur certificate
EU RoHS compliant	Yes
Ambient temperature range	-20 to +45 °C

## Product Data

Order product name	CorePro LEDtube 1200mm 15.5W 840 T8 AP I
--------------------	--

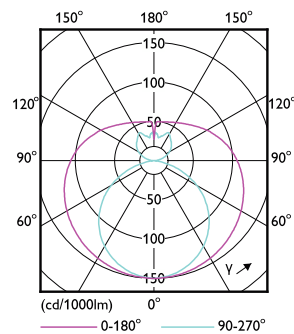
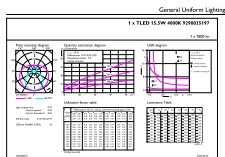
Full product name	CorePro LEDtube 1200mm 15.5W 840 T8 AP I
Full product code	872016927708300
Order code	929003519708
Material Nr. (12NC)	929003519708
Numerator - Quantity Per Pack	1
EAN/UPC - Product/Case	8720169277083
Numerator - Packs per outer box	20
EAN/UPC - Case	8720169277090

## Dimensional drawing



Product	D1	D2	A1	A2	A3
CorePro LEDtube 1200mm 15.5W 840 T8 AP I	28 mm	28 mm	1,198 mm	1,205 mm	1,212 mm

## Photometric data

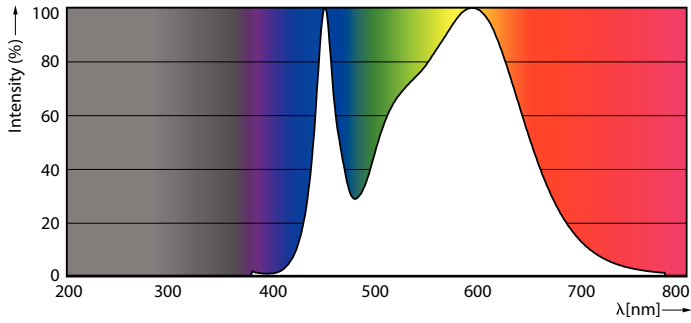


General uniform lighting - CorePro LEDtube 1200mm 15.5W 840 T8 AP I

Light Distribution Diagram - CorePro LEDtube 1200mm 15.5W 840 T8 AP I

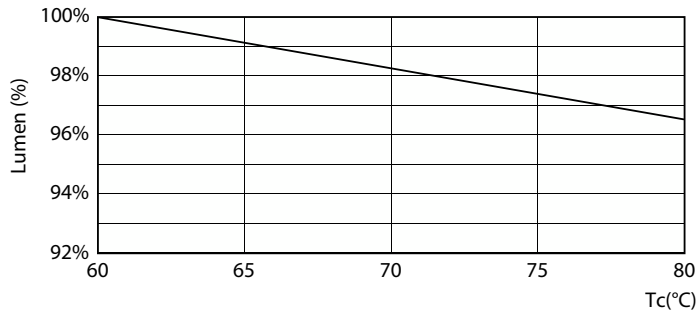
# CorePro LEDtube EM/Mains T8

## Photometric data

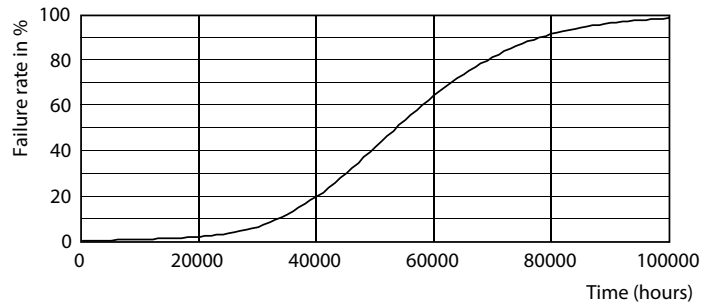


Spectral Power Distribution Colour - CorePro LEDtube 1200mm 15.5W 840 T8 AP I

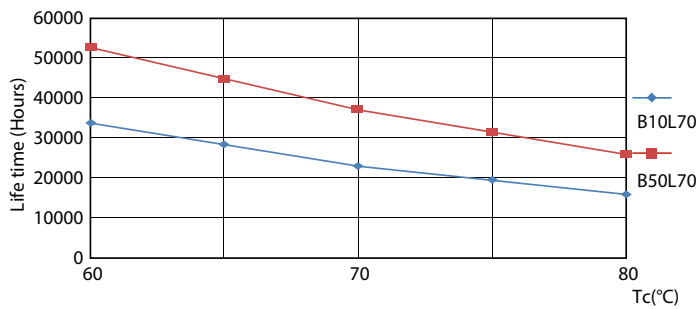
## Lifetime



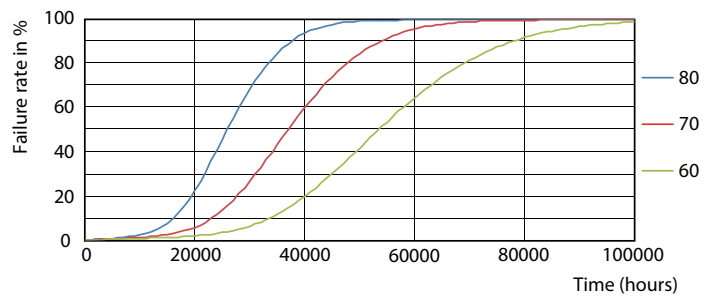
Lumen Maintenance Diagram - CorePro LEDtube 1200mm 15.5W 840 T8 AP I



Life Expectancy Diagram



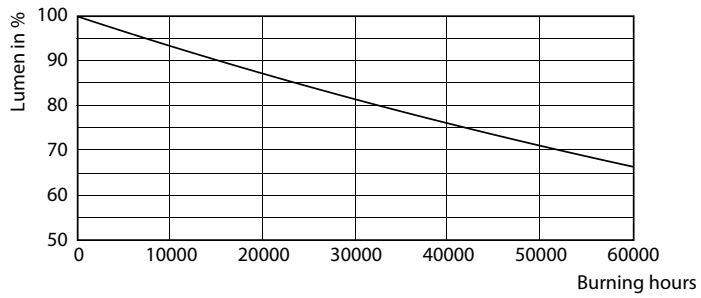
LifetimeVsTc



FailureRate

# CorePro LEDtube EM/Mains T8

## Lifetime



Lumen Maintenance Diagram - CorePro LEDtube 1200mm 15.5W 840 T8 AP I

