



CorePro LEDtube EM/ Mains T8

CorePro LEDtube 600mm 8W 840 T8 AP I

The CorePro LEDtube is an affordable LED solution suitable for replacing T8 fluorescent lamps. The product provides a natural lighting effect for use in general lighting applications, as well as instant energy savings – an environmentally friendly solution.

Warnings and Safety

• -

Product data

General Information		Operating and Electrical	
Cap-Base	G13 [Medium Bi-Pin Fluorescent]	Input Frequency	50 to 60 Hz
Nominal lifetime	50,000 hour(s)	Power Consumption	8 W
Switching Cycle	200,000	Lamp Current (Nom)	46 mA
Lighting Technology	LED	Starting Time (Nom)	0.5 s
		Warm-up time to 60% light	0.5 s
		Power Factor (Fraction)	0.9
		Voltage (Nom)	220-240 V
Light Technical		Temperature	
Color Code	840 [CCT of 4000K]	T-Case Maximum (Nom)	50 °C
Beam Angle (Nom)	240 degree(s)		
Luminous Flux	800 lm	Controls and Dimming	
Color Designation	Cool White (CW)	Dimmable	No
Correlated Color Temperature (Nom)	4000 K		
Luminous Efficacy (rated) (Nom)	100 lm/W	Mechanical and Housing	
Color Consistency	<6	Bulb Finish	Frosted
Color rendering index (CRI)	80	Bulb Material	Glass
LLMF At End Of Nominal Lifetime (Nom)	70 %		
Photobiological safety according to EN 62471	RG0		

CorePro LEDtube EM/Mains T8

Product Length	600 mm
Bulb Shape	T8
Net Weight (Piece)	0.120 kg

Approval and Application

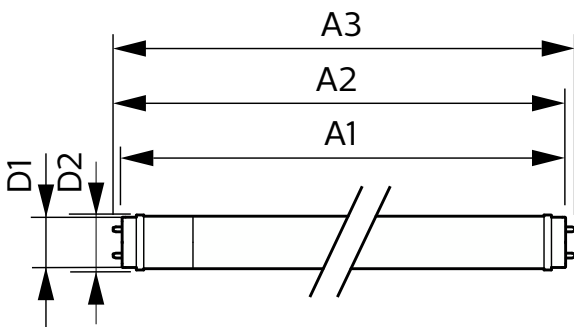
Energy Saving Product	Yes
Approval Marks	RoHS compliance KEMA Keur certificate
EU RoHS compliant	Yes
Ambient temperature range	-20 to +45 °C

Product Data

Order product name	CorePro LEDtube 600mm 8W 840 T8 AP I
--------------------	--------------------------------------

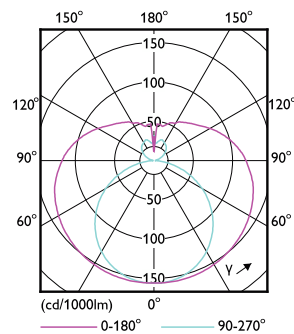
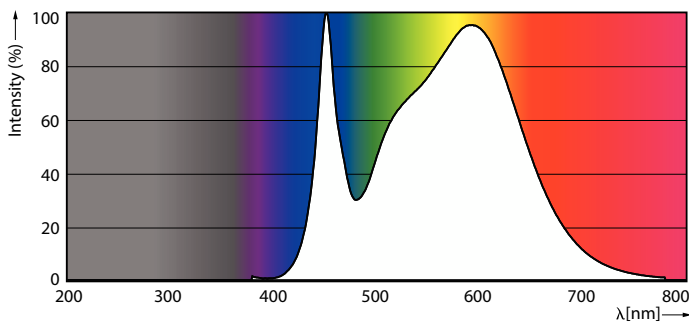
Full product name	CorePro LEDtube 600mm 8W 840 T8 AP I
Full product code	872016927700700
Order code	929003547208
Material Nr. (12NC)	929003547208
Numerator - Quantity Per Pack	1
EAN/UPC - Product/Case	8720169277007
Numerator - Packs per outer box	20
EAN/UPC - Case	8720169277014

Dimensional drawing



Product	D1	D2	A1	A2	A3
CorePro LEDtube 600mm 8W 840 T8 AP I	28 mm	28 mm	588.5 mm	595.5 mm	602.5 mm

Photometric data

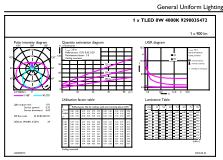


Spectral Power Distribution Colour - CorePro LEDtube 600mm 8W 840 T8 AP I

Light Distribution Diagram - CorePro LEDtube 600mm 8W 840 T8 AP I

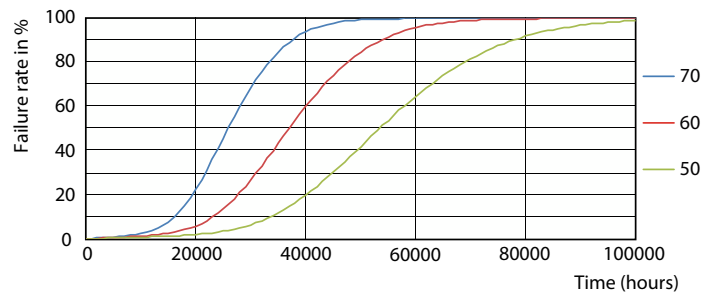
CorePro LEDtube EM/Mains T8

Photometric data

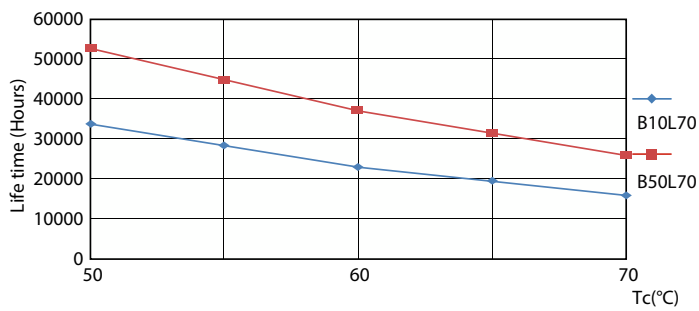


General uniform lighting - CorePro LEDtube 600mm 8W 840 T8 AP I

Lifetime

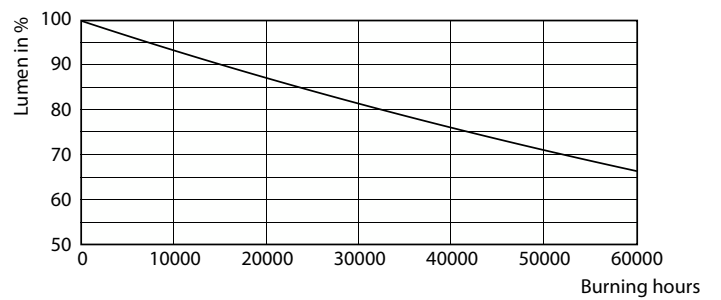


Life Expectancy Diagram



LifetimeVsTc

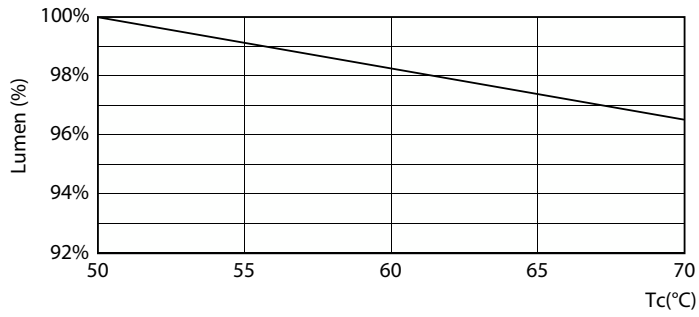
FailureRate



Lumen Maintenance Diagram - CorePro LEDtube 600mm 8W 840 T8 AP I

CorePro LEDtube EM/Mains T8

Lifetime



Lumen Maintenance Diagram - CorePro LEDtube 600mm 8W 840 T8 AP I

