



PRODUCT FEATURES

- Round and slim profile
- Delivers wide range of lumen package for direct alternatives to traditional wall and ceiling lamp
- Easy installation and tool-less wiring
- IP40 protection
- Operation temperature -20°C to 40°C
- Mounting kit for junction box available



APPLICATIONS

- Corridors
- Hotels
- Kitchens
- Residential

PRODUCT INFORMATION

Model Number	FCL74200v0
Product Code	FCL74200v0+830+WH
MM Code	MM11249

ELECTRICAL INFORMATION

Input Voltage	220-240 VAC
Frequency	50/60 Hz
Input Current	58 mA
Power	12 W
Power Factor	>0.9
Surge Protection	1000
Inrush Current	4.04 A
Inrush Duration	30.17 µs

PHOTOMETRICAL INFORMATION

Luminous Flux	1080
Luminous Efficacy	90 lm/W
Colour Temp	3000 K
CRI	Ra80
Beam Angle	120 °
Beam Angle Selectable	No
Colour Consistency	6
Max. intensity	340
Flickering	<8% @100Hz
SVM	0.1
P _{ST} LM	0.1

LIFE PERFORMANCE

Number of Switching Cycles	100000
----------------------------	--------

STANDARDS AND APPLICATION

IP	IP40/IP40
IK	03
Protection Class	CL II
Glow Wire	650 °C
Photobiological Safety Group	RG0
Energy Class	E
Standards Compliance	IEC/EN60598-1,IEC/EN60598-2-1

INSTALLATION AND CAPABILITIES

Installation	Surface Mount,Suspended
B10	138
B16	219
C10	228
C16	372

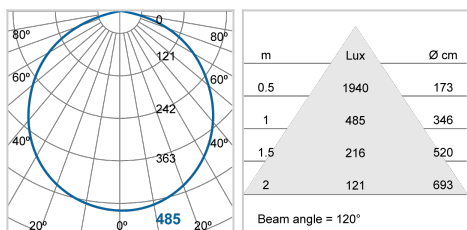
MECHANICAL AND METIERIAL

Optics Material	Polycarbonate
Housing Material	PPT
Housing Colour	White
Diameter	Ø220 mm
Height	40 mm
Weights	250 g

WIRING DIAGRAM



PHOTOMETRIC DIAGRAM



LOGISTIC INFORMATION

MM Code	Packaging Unit	Outer Box Dimensions			Gross Weight per Outer Box
		L	W	H	
	pcs/unit	mm	mm	mm	kg
MM11249	20	465	440	240	6.5