

PRODUCT FEATURES

- Durable die cast aluminum with anti-corrosion powder coating and tempered glass
- Efficient heat dissipation
- Beam angle 110°
- IP65 waterproof for standard and IP54 for PIR Sensor version
- IK08 rated vandal resistant
- With 0.5m H05RN-F 3G1.0mm2 cable
- Standard version is available for 10W, 20W, 30W, 50W, 100W, 150W & 200W
- PIR Sensor version is available for 10W, 20W, 30W & 50W
- Fixing bracket adjustable up to 180°

APPLICATIONS

- Billboards
- Façade
- Gate areas
- Industrial Areas
- Warehouses

GENERAL INFORMATION

Input Voltage / Frequency	220-240 VAC / 50/60
Power Factor	>0.9
CRI	Ra80
Beam Angle	110
Colour Consistency	6
Number of Switching Cycles	100000
IP	IP54/IP54, IP65/IP65
IK	3, 8
Protection Class	CL I
Glow Wire	650
Photobiological Safety Group	RG1
Flickering percentage	>30% @100Hz
Material & Colour	Aluminum die-casting / BK13
Installation	Surface Mount

PRODUCT INFORMATION

Model no.	MM Code	Power W	Luminous Flux lm	Luminous Efficacy lm/W	Colour Temp. K
FFL72300v0	-	150	12750	85	3000
FFL72300v0	MM11290	150	12750	85	4000
FFL72300v0	MM11309	150	12750	85	6500
FFL71800v0	MM11302	10	900	90	3000
FFL71800v0	MM11285	10	900	90	4000
FFL71800v0	MM11303	10	900	90	6500
FFL71800v0-ps	-	11	850	77	3000
FFL71800v0-ps	MM11292	11	850	77	4000
FFL71800v0-ps	-	11	850	77	6500
FFL71900v0	-	20	1700	85	3000
FFL71900v0	MM11286	20	1700	85	4000
FFL71900v0	-	20	1700	85	6500
FFL71900v0-ps	-	21	1700	81	3000
FFL71900v0-ps	MM11293	21	1700	81	4000
FFL71900v0-ps	-	21	1700	81	6500
FFL72000v0	MM11304	30	2550	85	3000
FFL72000v0	MM11287	30	2550	85	4000
FFL72000v0	MM11305	30	2550	85	6500
FFL72000v0-ps	-	31	2550	82	3000
FFL72000v0-ps	MM11294	31	2550	82	4000
FFL72000v0-ps	-	31	2550	82	6500
FFL72100v0	MM11306	50	4250	85	3000

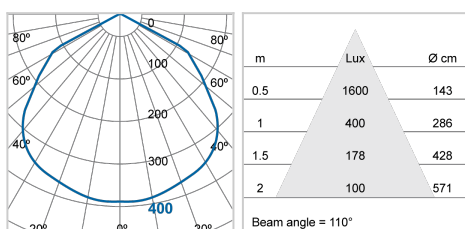
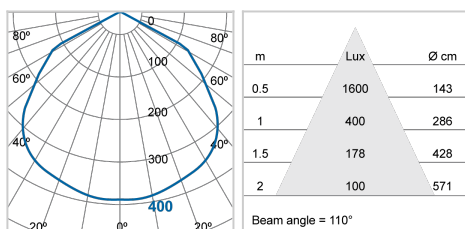
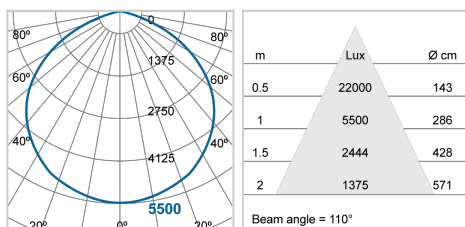
FFL72100v0	MM11288	50	4250	85	4000
FFL72100v0	MM11307	50	4250	85	6500
FFL72100v0-ps	-	51	4250	83	3000
FFL72100v0-ps	MM11295	51	4250	83	4000
FFL72100v0-ps	-	51	4250	83	6500
FFL72200v0	-	100	8500	85	3000
FFL72200v0	MM11289	100	8500	85	4000
FFL72200v0	MM11308	100	8500	85	6500
FFL72400v0	-	200	17000	85	3000
FFL72400v0	MM11291	200	17000	85	4000
FFL72400v0	MM11310	200	17000	85	6500

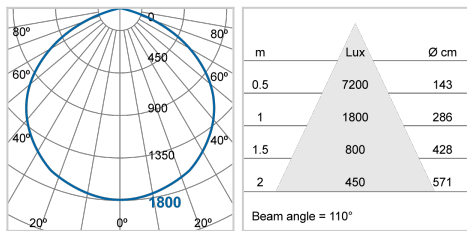
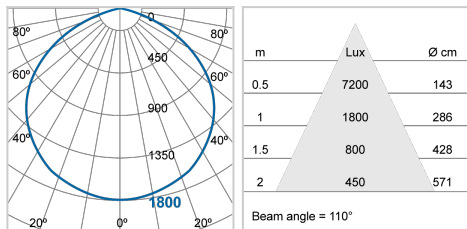
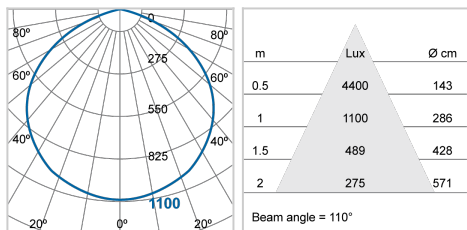
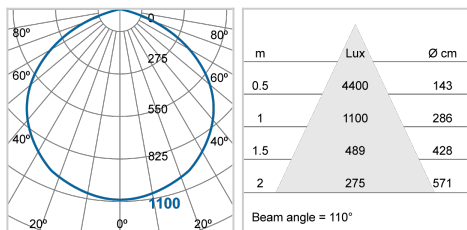
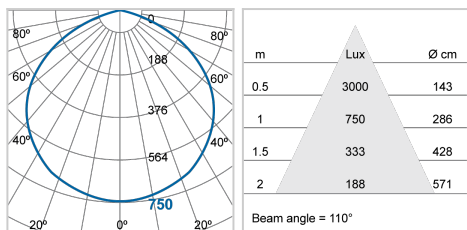
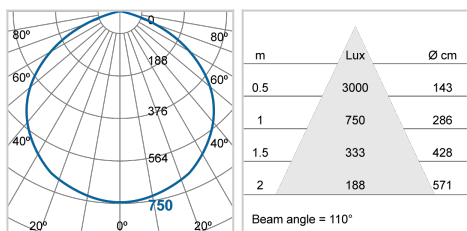
Model no.	Inrush Current	Inrush Duration	Max. No. of Luminaire Connection on MCB			
	A	µs	B10	B16	C10	C16
FFL72300v0	1.4	1	13	20	21	34
FFL71800v0	0.1	1	190	302	314	513
FFL71800v0-ps	0.1	1	190	302	314	513
FFL71900v0	0.18	1	95	151	157	256
FFL71900v0-ps	0.18	1	95	151	157	256
FFL72000v0	0.28	1	63	101	105	171
FFL72000v0-ps	0.28	1	63	101	105	171
FFL72100v0	0.68	1	38	60	63	103
FFL72100v0-ps	0.68	1	38	60	63	103
FFL72200v0	0.9	1	19	30	31	51
FFL72400v0	1.8	1	10	15	16	26

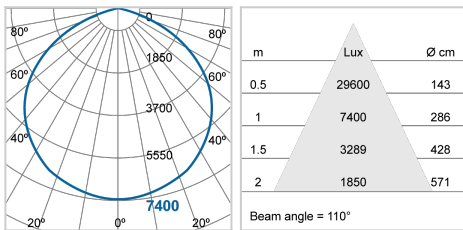
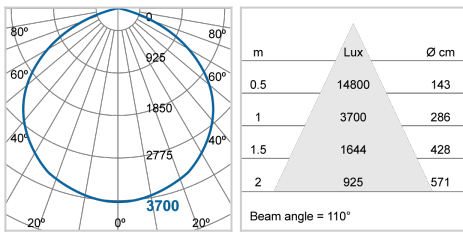
DIMENSIONS & WEIGHT

Model no.	L	W	H	Weight
	mm	mm	mm	g
FFL72300v0	290	329	33	2100
FFL71800v0	104	103	23	270
FFL71800v0-ps	154	104	45	320
FFL71900v0	119	121	24	340
FFL71900v0-ps	163	121	45	390
FFL72000v0	145	160	26	460
FFL72000v0-ps	196	160	45	520
FFL72100v0	195	206	30	740
FFL72100v0-ps	230	206	45	790
FFL72200v0	238	274	32	1200
FFL72400v0	324	381	40	3100

PHOTOMETRIC DIAGRAM







LOGISTIC INFORMATION

Model no.	Packaging Unit	Outer Box Dimensions			Gross Weight per Outer Box
		L	W	H	
	pcs/unit	mm	mm	mm	kg
FFL72300v0	6	350	255	285	13.3
FFL71800v0	40	295	285	255	10.4
FFL71800v0-ps	40	535	225	350	12.7
FFL71900v0	40	365	275	280	12.8
FFL71900v0-ps	30	390	285	370	11.9
FFL72000v0	24	345	275	315	11.7
FFL72000v0-ps	20	345	295	430	11.6
FFL72100v0	16	435	375	205	12.4
FFL72100v0-ps	16	435	235	490	13.9
FFL72200v0	10	570	225	245	13.6
FFL72400v0	4	405	200	315	12.6