



#### PRODUCT FEATURES

- Durable die cast aluminum with anti-corrosion powder coating and tempered glass
- Efficient heat dissipation
- Beam angle 110°
- IP65 waterproof for standard and IP54 for PIR Sensor version
- IK08 rated vandal resistant
- With 0.5m H05RN-F 3G1.0mm2 cable
- Standard version is available for 10W, 20W, 30W, 50W, 100W, 150W & 200W
- PIR Sensor version is available for 10W, 20W, 30W & 50W
- Fixing bracket adjustable up to 180°

#### APPLICATIONS

- Billboards
- Façade
- Gate areas
- Industrial Areas
- Warehouses

FFL72200v0+840+BK13

## PRODUCT INFORMATION

Model Number	FFL72200v0
Product Code	FFL72200v0+840+BK13
MM Code	MM11289

## ELECTRICAL INFORMATION

Input Voltage	220-240 VAC
Frequency	50/60 Hz
Input Current	426 mA
Power	100 W
Power Factor	>0.9
Surge Protection	1000 2000
Inrush Current	0.9 A
Inrush Duration	1 µs

## PHOTOMETRICAL INFORMATION

Luminous Flux	8500
Luminous Efficacy	85 lm/W
Colour Temp	4000 K
CRI	Ra80
Beam Angle	110 °
Beam Angle Selectable	No
Colour Consistency	6
Max. intensity	3700
Flickering	>30% @100Hz
SVM	4.15
P <sub>ST</sub> LM	1

## LIFE PERFORMANCE

Number of Switching Cycles	100000
----------------------------	--------

## STANDARDS AND APPLICATION

IP	IP65/IP65
IK	8
Protection Class	CL I
Glow Wire	650 °C
Photobiological Safety Group	RG1
Energy Class	F
Standards Compliance	IEC/EN60598-1,IEC/EN60598-2-5

## INSTALLATION AND CAPABILITIES

Installation	Surface Mount
B10	19
B16	30
C10	31
C16	51

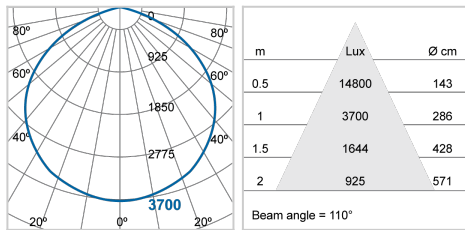
FFL72200v0+840+BK13

### MECHANICAL AND METIERIAL

Optics Material	Tempered Glass
Housing Material	Aluminum die-casting
Housing Colour	BK13
Length	238 mm
Width	274 mm
Height	32 mm
Weights	1200 g

Remarks  
Open wire version

### PHOTOMETRIC DIAGRAM



### LOGISTIC INFORMATION

MM Code	Packaging Unit	Outer Box Dimensions			Gross Weight per Outer Box
		L	W	H	
	pcs/unit	mm	mm	mm	kg
MM11289	10	570	225	245	13.6