



PRODUCT FEATURES

- Round and slim profile
- Delivers wide range of lumen package for direct alternatives to traditional wall and ceiling lamp
- Easy installation and tool-less wiring
- IP40 protection
- Operation temperature -20°C to 40°C
- Mounting kit for junction box available



APPLICATIONS

- Corridors
- Hotels
- Kitchens
- Residential

PRODUCT INFORMATION

Model Number	FCL74400v0
Product Code	FCL74400v0+865+WH
MM Code	MM11254

ELECTRICAL INFORMATION

Input Voltage	220-240 VAC
Frequency	50/60 Hz
Input Current	113 mA
Power	24 W
Power Factor	>0.9
Surge Protection	1000
Inrush Current	31 A
Inrush Duration	52.3 μ s

PHOTOMETRICAL INFORMATION

Luminous Flux	2400
Luminous Efficacy	100 lm/W
Colour Temp	6500 K
CRI	Ra80
Beam Angle	120 °
Beam Angle Selectable	No
Colour Consistency	6
Max. intensity	730
Flickering	<8% @100Hz
SVM	0.1
P _{ST} LM	0.1

LIFE PERFORMANCE

Number of Switching Cycles	100000
----------------------------	--------

STANDARDS AND APPLICATION

IP	IP40/IP40
IK	3
Protection Class	CL II
Glow Wire	650 °C
Photobiological Safety Group	RG0
Energy Class	E
Standards Compliance	IEC/EN60598-1,IEC/EN60598-2-1

INSTALLATION AND CAPABILITIES

Installation	Surface Mount,Suspended
B10	18
B16	29
C10	30
C16	49

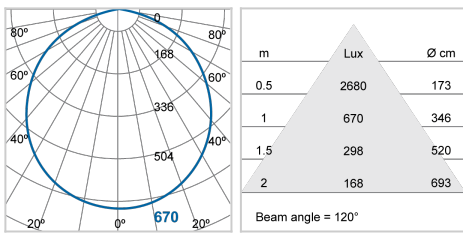
MECHANICAL AND METIERIAL

Optics Material	Polycarbonate
Housing Material	PPT
Housing Colour	White
Diameter	Ø350 mm
Height	43 mm
Weights	530 g

WIRING DIAGRAM



PHOTOMETRIC DIAGRAM



LOGISTIC INFORMATION

MM Code	Packaging Unit	Outer Box Dimensions			Gross Weight per Outer Box
		L	W	H	
	pcs/unit	mm	mm	mm	kg
MM11254	10	530	365	365	7.3