



PRODUCT FEATURES

- Round and slim profile
- Delivers wide range of lumen package for direct alternatives to traditional wall and ceiling lamp
- Easy installation and tool-less wiring
- IP40 protection
- Operation temperature -20°C to 40°C
- Mounting kit for junction box available



APPLICATIONS

- Corridors
- Hotels
- Kitchens
- Residential

PRODUCT INFORMATION

Model Number	FCL74300v0
Product Code	FCL74300v0+865+WH
MM Code	MM11252

ELECTRICAL INFORMATION

Input Voltage	220-240 VAC
Frequency	50/60 Hz
Input Current	86 mA
Power	18 W
Power Factor	>0.9
Surge Protection	1000
Inrush Current	25.4 A
Inrush Duration	67.55 µs

PHOTOMETRICAL INFORMATION

Luminous Flux	1800
Luminous Efficacy	100 lm/W
Colour Temp	6500 K
CRI	Ra80
Beam Angle	120 °
Beam Angle Selectable	No
Colour Consistency	6
Max. intensity	510
Flickering	<8% @100Hz
SVM	0.1
P _{ST} LM	0.1

LIFE PERFORMANCE

Number of Switching Cycles	100000
----------------------------	--------

STANDARDS AND APPLICATION

IP	IP40/IP40
IK	3
Protection Class	CL II
Glow Wire	650 °C
Photobiological Safety Group	RG0
Energy Class	E
Standards Compliance	IEC/EN60598-1,IEC/EN60598-2-1

INSTALLATION AND CAPABILITIES

Installation	Surface Mount,Suspended
B10	22
B16	35
C10	36
C16	59

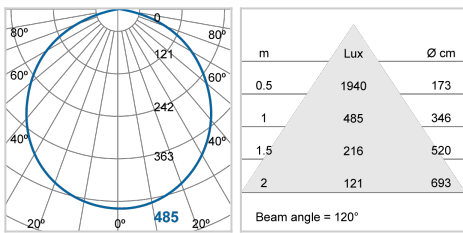
MECHANICAL AND MATERIAL

Optics Material	Polycarbonate
Housing Material	PPT
Housing Colour	White
Diameter	Ø290 mm
Height	42 mm
Weights	370 g

WIRING DIAGRAM



PHOTOMETRIC DIAGRAM



LOGISTIC INFORMATION

MM Code	Packaging Unit	Outer Box Dimensions			Gross Weight per Outer Box
		L	W	H	
	pcs/unit	mm	mm	mm	kg
MM11252	20	605	520	310	10.1