



### PRODUCT FEATURES

- Round and slim profile
- Delivers wide range of lumen package for direct alternatives to traditional wall and ceiling lamp
- Easy installation and tool-less wiring
- IP40 protection
- Operation temperature -20°C to 40°C
- Mounting kit for junction box available

### APPLICATIONS

- Corridors
- Hotels
- Kitchens
- Residential

## PRODUCT INFORMATION

Model Number	FCL74300v0
Product Code	FCL74300v0+830+WH
MM Code	MM11251

## ELECTRICAL INFORMATION

Input Voltage	220-240 VAC
Frequency	50/60 Hz
Input Current	86 mA
Power	18 W
Power Factor	>0.9
Surge Protection	1000
Inrush Current	25.4 A
Inrush Duration	67.55 µs

## PHOTOMETRICAL INFORMATION

Luminous Flux	1800
Luminous Efficacy	100 lm/W
Colour Temp	3000 K
CRI	Ra80
Beam Angle	120 °
Beam Angle Selectable	No
Colour Consistency	6
Max. intensity	510
Flickering	<8% @100Hz
SVM	0.1
P <sub>ST</sub> LM	0.1

## LIFE PERFORMANCE

Number of Switching Cycles	100000
----------------------------	--------

## STANDARDS AND APPLICATION

IP	IP40/IP40
IK	3
Protection Class	CL II
Glow Wire	650 °C
Photobiological Safety Group	RG0
Energy Class	E
Standards Compliance	IEC/EN60598-1,IEC/EN60598-2-1

## INSTALLATION AND CAPABILITIES

Installation	Surface Mount,Suspended
B10	22
B16	35
C10	36
C16	59

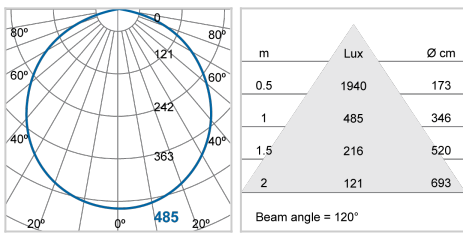
### MECHANICAL AND MATERIAL

Optics Material	Polycarbonate
Housing Material	PPT
Housing Colour	White
Diameter	Ø290 mm
Height	42 mm
Weights	370 g

### WIRING DIAGRAM



### PHOTOMETRIC DIAGRAM



### LOGISTIC INFORMATION

MM Code	Packaging Unit	Outer Box Dimensions			Gross Weight per Outer Box
		L	W	H	
	pcs/unit	mm	mm	mm	kg
MM11251	20	605	520	310	10.1